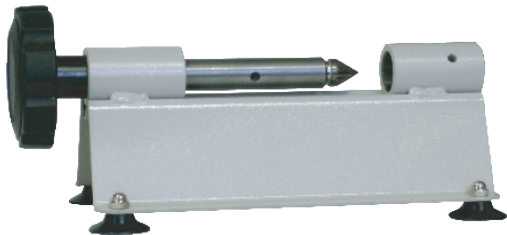


MS-1 Drill Bit Sharpener



- For use with Style A and L hollow drill bits
- Precision sharpener with a self-seating, lathe type construction on a heavy-duty base
- Comes with suction feet for stability and portability, but can be removed for mounting purposes
- Constructed with a solid carbide cutting head for a long sharpening life

Specifications

- Actual weight: 2 lbs
- Shipping weight: 2 lbs
- Ships via: UPS